



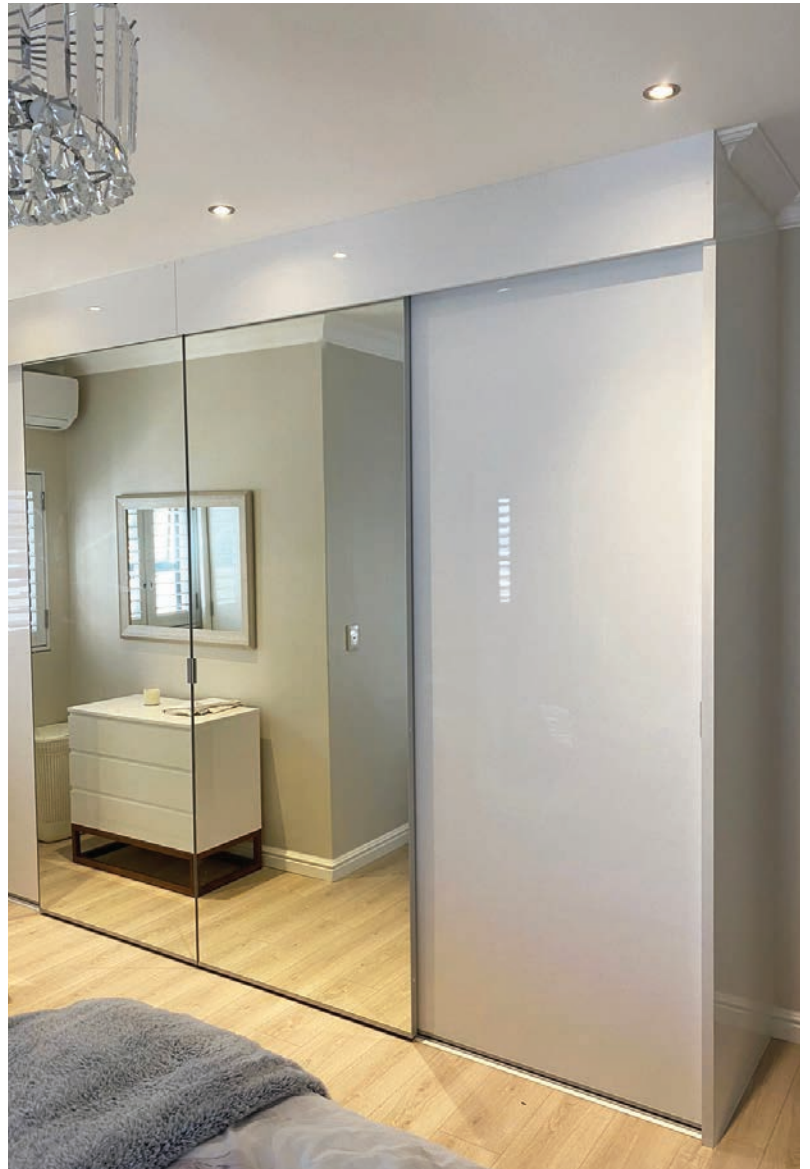
*Beautiful*

Space Creation Wardrobes

**Fineline<sup>®</sup> 40**  
WARDROBE SOLUTIONS YEARS



*Frameless grey tinted mirror sliding doors and island*



*Combination mirror and high gloss sliding doors*



*Frameless mirror sliding doors*



*Combination mirror and decor glass sliding doors*



*Frameless grey tinted mirror sliding doors*





*Combination Metro melamine and mirror sliding doors* →



*White melamine internals with no doors (of wardrobe on left)*



*Melamine sliding doors*



*Double sided decor glass sliding door*

Fineline mirror doors create spacious, lighter, brighter bedrooms. Wide opening, swish sliding door panels have transformed bedrooms and earned world-wide approval. With complete safety, sliding door panels gain as much as 25% more storage space while saving on floor space.

Fineline sliding doors are equally suited to living room or office cupboards, where the finish can meet your design needs. Finishes can include mirror, contemporary decorative glass, woodgrain, sandblasted glass or a solid colour. Almost anything is possible... innovation is our keyword to meet modern needs!

**Specification note:** Twin track sliding systems require added operating depth - we recommend 680mm (640 min)

*Innovators in design, quality, reliability and safety.*

**Fineline exclusive wardrobe systems are...**

- 'Made to measure'
- Professionally installed
- Adaptable to all room shapes and dimensions
- Make 100% use of available space

Fineline systems easily convert existing hinged door cupboards with made to measure sliding doors of your choice that will transform your bedroom.

**All Fineline doors are manufactured to meet and be compliant with SABS 1263 - 1 which forms part of the national building regulations.**



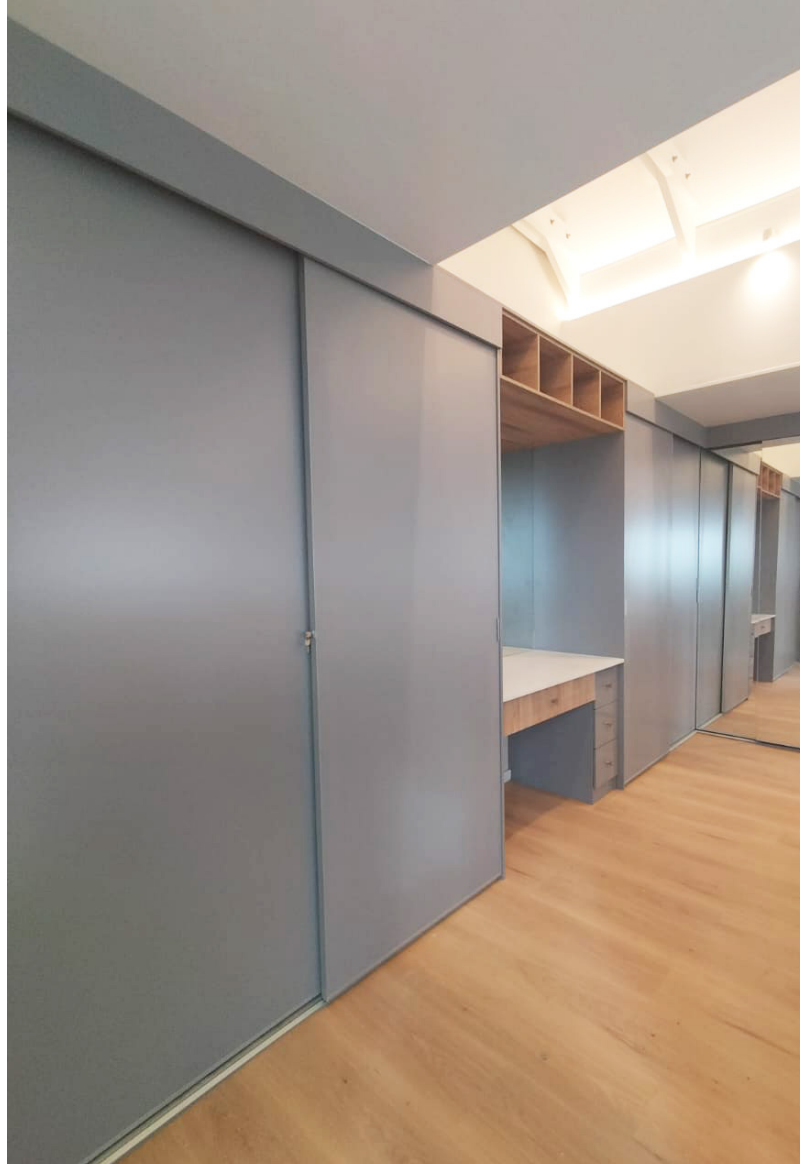
*Woodgrain internals of walk-in wardrobe*



*Internals of L shaped wardrobe*



*Pull out shoe drawer*



*Grey melamine sliding doors with dressing table*

### **Fineline Cape Town:**

19 Lowestoft Road, Paarden Eiland  
Email: [capetown@finelinesolutions.co.za](mailto:capetown@finelinesolutions.co.za)  
Tel: (021)706-4597

### **Fineline Johannesburg:**

Unit No.12, Entech Industrial Park,  
Cnr Factory and Richard Roads, Industria North  
Email: [fineline@finelinesolutions.co.za](mailto:fineline@finelinesolutions.co.za)  
Tel: (011) 477-5408



[www.finelinesolutions.co.za](http://www.finelinesolutions.co.za)

**Homedécor**  
innovations

**ksa**  
The Kitchen Specialists  
ASSOCIATION  
MEMBER

**SAGGA**