

ALFATRON

POWER/LITE

BARIX

ZΩ
ZERO-OHM
MULTISPEAKER SYSTEM

InFocus

biamp.

SONY

ROLLS

SMART-BUS **G4**

BOSE
PROFESSIONAL

beyerdynamic

Grandview

EVOKO

Cloud

**catch
box**



Alpha Technologies is a Distribution company specializing in audio, visual and automation products for the African market. We are dedicated to providing excellent customer service to our resellers/dealers, as well as offering expert support regarding our products and brands.

An important part of the specialist services offered by Alpha Technologies, is our on-going dealer training. Our range of products are specifically chosen and put together to provide our resellers/dealers with a comprehensive turnkey solution, based on high quality brands and enticing warranty offerings.

We, at Alpha Technologies, share a common goal of always giving the best service and support possible and look forward to building a strong partnership with your organization, through our team of willing, motivated and highly experienced staff.

SALES

At Alpha Technologies each sales person has been specifically chosen according to their strengths and capabilities. With over 109 years in combined experience across our team, you can rest assured that your requirements are processed with the skills and consideration that it takes to ensure a perfect solution every time. We are all committed to customer service, and the team will often brainstorm together when working out the best solution for each project. Our sales team will accompany you to any site visit to thoroughly understand the clients needs before making any recommendations. At the end of the day, when all is said and done, our team does whatever can to ensure you are successful in being awarded projects, resulting in a satisfied end user experience. We are proud to say that we go the extra mile.

SOLUTIONS

AV Solution Design: “A means of solving a particular Audio Visual problem with products or services designed to meet a particular need.”

At Alpha Technologies we focus on providing you, our integration partner, with an AV design that solves your client’s requirement with a mix of our products that is engineered for their specific needs and provides them with a user friendly experience in accessing and using their Audio Visual systems. Our team of highly experienced technology engineers have a combined experience of over 100 years in Audio Visual design and services and are geared towards providing you with a wholistic design so you can be confident in your presentation to you client. From Design to implementation we strive to support you every step of the way

SERVICES

At Alpha Technologies we believe in excellent after sales service. Since inception we have sold top quality brands and support them through our dedicated repair centres in Johannesburg, Cape Town and Durban. We are committed to ensuring a fast turnaround time with any repair assessments and believe in the integrity of products which is a significant benefit especially when dealing with SLAs. Our warranties vary according to the specific brand and we offer up to 7 years on our Alfatron Electronics products.



Alfatron Electronics South Africa is an innovative South African inspired product range, designed specifically to meet the unique needs of the African AV market.



Amplifiers



Audio Converters



Ceiling Loudspeakers



Cabinet Speakers



Volume Controls



Cameras





Distribution Amplifiers



HDMI Extenders



Matrix Switchers



Modular Matrix Switcher



Scaler Switchers



Switcher





AV Over IP



Interactive Screens



Boosters & HDCP Convertors



USB BOOSTER EXTENSION CABLES

Available in USB2.0 and USB 3.0 in the following lengths
5M|10M|15M.



HDMI CABLES





beyerdynamic

High-quality headphones and microphones made in Germany.

beyerdynamic has a passion for audio technology with outstanding sound quality – and it shows. Anyone who has ever put on a pair of beyerdynamic headphones and listened to music or played their favorite video game with one of our headsets will attest to that fact. In addition to open and closed headphones and powerful headphone amplifiers, in the beyerdynamic shop you'll also find innovative conference systems and the right microphone for your application. Whether for at home or on the go, for professional DJs, or studio recording we have the right product for every need.



Alpha Technologies is the Sole Distributor for beyerdynamic in Southern Africa and has been working with the German based brand since 2006. Beyerdynamic is known world wide for providing both wired and wireless conference solutions to suit every need for the corporate and government sectors. Alpha Technologies has designed and commissioned both wired and wireless conference systems for the South African and local government departments as well as various African states.

The German manufactured microphones are used where the requirement is to get the message across in crystal clear quality. This is typically in council chambers, assemblies and court rooms.

Beyerdynamic headphones are widely used in translation, recording and studios around the globe.

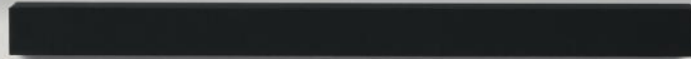
BARIX

BARIX

BARIX is a skills-based company offering expertise in leading-edge, IP-based communications and control technology. The company is based in Zurich/Switzerland and specialises in the research, development and production of system components for applications in Pro Audio, Security and Automation. Barix AG was founded in 2001 in Zurich, Switzerland. Within a short time the company has grown into an established world wide organization that distributes its technology over a network of authorized resellers.



biamp.™





For more than 40 years, Biamp has focused on making exceptional AV hardware and software for both enterprise and everyday applications. In spaces large and small, from conference rooms to complex enterprise applications for universities and beyond, our products help people connect and communicate.



Devio brings sophisticated conferencing technology to small spaces. With a single USB connection, Devio connects your laptop to the technology in your huddle room or collaboration space, for a superior audio experience.

TESIRA®



The Tesira line of audio servers, video servers and digital signal processors takes our legacy for customizable, configurable, medium-scale platforms and extends it to the large, extra large, and super-scale platforms.



apart



Around the world, around the clock, Biamp equipment manages and delivers immersive AV experiences . We deliver, manage and enhance professional audio and video for the most effective, natural communication possible.

Community



Delivering both long-term performance and high-quality sound, Community loudspeakers from Biamp elevate audio at the world's foremost sports venues, auditoriums, recreation, houses of worship and performance venues.

audia



Audia provides the processing power needed to make sure every word is heard. Audia's strength and flexibility makes it a perfect choice for a multitude of challenging installations.

vocia®



Our Vocia family is an advanced, multi-purpose networked public address and voice evacuation system. Vocia's distributed networked architecture gives you unprecedented scalability, flexibility, and reliability.

QtPRO®

The industry's first direct field sound masking system provides superior uniformity and energy efficiency



Sound Masking is a specifically tuned ambient background sound that targets the same frequency as human speech, reducing its intelligibility.

By adding sound masking to a workplace, conversations are notably less intelligible or noticeable, and thus less distracting. The workplace becomes more comfortable, private, and productive.



CROWD * & 1

Empower audience interactions by turning smartphones into wireless mics



Crowd Mics creates memorable and FUN experiences that increase engagement and excitement. The free app empowers attendees with great participation features.

Modena Hub



With Modena Hub, every laptop, tablet, or mobile device can both share screens with the room display and receive content, resulting in more comfortable meetings. By eliminating impediments like HDMI cables, adaptors, or dongles, Modena Hub brings out the best in BYOD.

*All Huddle Hub branded products will continue to be fully supported during and after this name transition, regardless of whether the unit says Huddle Hub One or Modena Hub.



Introducing Catchbox

We came up with the Catchbox because we wanted to change the status quo and make events more of a dialogue as opposed to a one way monologue. Tired of waiting for the handheld microphone to be passed around, we thought: what about making it throwable ? Turns out, not only is this faster, but it also makes events more engaging and fun.

Engage Your Audience with Catchbox, The World's First Throwable Microphone

Whether you want to increase engagement for conference attendees, activate students, or make meetings more fun, catchbox can help.

Active Automute

To avoid unwanted noises caused from throwing and dropping, Catchbox comes with a patent pending technology called Automute. Automute senses the motion of the Catchbox and temporarily switches off the audio when the device is thrown, caught or dropped.

Professional Sound Quality

Catchbox was designed first and foremost to have great audio quality. Not only has the frequency response of the mic been optimised for speech, but the special construction of the device eliminates all handling noises, whilst the automute feature mutes the mic when it is dropped or thrown.

Jeremy Caldera
AV pro for 14 years





For more than three decades, Bose has developed speakers and electronics to meet the demanding requirements of professional applications. But at Bose we also create technological advancements like Modeler® design software, the Auditor® audio demonstrator and LT loudspeaker technology. These tools and innovations enable designers and consultants to create more accurate, reliable, and cost-effective solutions.

Bose® Professional Systems is represented in South Africa by Alpha Technologies, we provide support to a nationwide network of carefully selected qualified Integration Partners. Our support includes product and technical information, marketing and demonstration materials, design resources and other materials and services. We help our Integration Partner take projects from start to finish and provide a high level of service after the job is done.

Over the course of his extraordinary life, Dr. Amar Bose was a scientist, inventor, professor, and entrepreneur. Shortly before his death he gave the majority of the stock of Bose Corporation to MIT in an act of extraordinary generosity and importance. We invite you to watch THE GIFT — a short film directed by Academy Award® winner Morgan Neville.

INTRODUCING BOSE WORK



Bose Work solutions bring the simplicity and clarity of Bose to conferencing and unified communications. Today the workplace is every place: office, home, car, and coffee shop. So we have solutions that make any meeting better whether people are in the same room or in different hemispheres.

Our products integrate seamlessly with existing platforms, bringing enhanced video and audio performance to popular third-party cloud services. Simplify huddle spaces with all-in-one solutions like the Bose Videobar VB1. Help remote workers feel more connected with desktop and mobile conferencing products like Bose Noise Cancelling Headphones 700 UC. And design fully integrated, high-performance systems for the most demanding rooms using products like Bose ControlSpace Designer software, EdgeMax loudspeakers, and ControlSpace EX processors. Bose Work solutions help teams collaborate more effectively, moving beyond “good enough” audio and video so interactions are more natural and people can hear more, see more, understand more — and work better.

BOSE

PROFESSIONAL

Bose S1 PRO



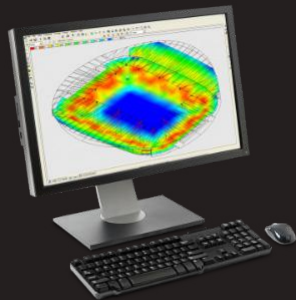
With the S1 Pro, we didn't just make a smaller PA. That's easy. We designed a system for you — purpose-built using key technologies from the acclaimed Bose L1 and F1 families.

You get stunning clarity and practical portability. It's a streamlined system with all the features you need to get in, set up, and simply perform — all in an ultra-compact design that weighs less than 7 kg.



LOUDSPEAKER

For more than 40 years, Bose Professional loudspeakers have demonstrated excellence in sound quality and reliability, in some of the world's leading performing arts centers, auditoriums, houses of worship, sports arenas, retail shops, hotels, conference rooms, dance clubs, and live music venues. Wherever premium sound quality is valued, you are likely to find Bose Professional loudspeakers.



SOFTWARE

From acoustical modeling to signal processing to end-user control, Bose Professional offers a wide range of software applications that assist designers and integrators in creating easy-to-use, high-quality, reliable audio systems.



AMPLIFIERS

With over 20 amplifier SKUs available today, Bose Professional offers a full portfolio to meet a wide range of needs. From multi-channel, high-output power amplifiers for driving foreground and live music reproduction, to combination mixer/amplifiers for background music and paging. They offer a high level of scalability, configurability, and connectivity. Patented Bose technology ensures high-quality, reliable sound performance that's supported by a Limited Warranty covering five years from the date of purchase.



SIGNAL PROCESSING & NETWORK

A variety of flexible and easily configurable engineered sound processors, help deliver the audio performance and the ease-of-use that businesses depend on. The processors create versatile, easy-to-control sound systems that enable source selection, routing and general processing for a predictable solution to nearly any project.



PORTABLE PA SYSTEMS

Bose Professional portable PA systems use proprietary technologies to provide best-in-class sound coverage and portability for nearly any performer or application. Our unique designs feature higher vocal projection and clarity, stronger output levels over distance, and consistent coverage and tonal balance throughout the venue. Whether you are a solo musician, mobile DJ or a full band, Bose portable systems ensure that you provide the best sound to your audience.



CONFERENCING

Bose Work solutions bring the simplicity and clarity of Bose to conferencing. From all-in-one innovations for huddle spaces, to desktop and mobile conferencing products, to fully integrated systems for meeting rooms, Bose Work solutions help everyone hear more, see more, understand more — and work better.



The 1970's saw the emergence in the USA, the UK and subsequently worldwide of the discotheque as a prime entertainment venue for a new, young generation, and of the creation of a new and major role for the DJ. Cloud Electronics was created during this period by founding partners Roy Millington and Andrew Colley, specifically to provide this dynamic and growing industry with its own purpose-designed, professional audio tools. Over the course of more than 30 years the demand for Cloud's particular brand of "clearly better sound" continues to grow.

Cloud continues to expand its product range to meet the audio needs of many different styles of venue. Cloud equipment is now found in more than 100,000 commercial venues around the world from ocean liners to houses of worship, from five-star hotels to Michelin-starred restaurants, as well as the high street outlets of the world's most well-known brands.

Digitally Controlled Mixers

Cloud's digitally controlled zone mixer combines traditional "installer-friendly" analogue I/O and signal path, with the flexibility and adaptability of digital control.

Analogue Mixers

Cloud's analogue Mixers are versatile analogue single zone/ multi zone audio mixer known for performance, features, flexibility and reliability.

Mixers Amplifiers

Cloud's Mixer Amplifiers are integrated, analogue audio mixer amplifier. It combines simple control of background music with versatile microphone paging and power amplification in a single unit.

Amplifiers

Cloud amplifiers are a range of multichannel audio amplifiers intended for use with high quality PA and music systems in locations where unquestionable long-term reliability is the primary consideration.

Headphone Distribution System

The Cloud headphone distribution matrix designed to provide headphone monitoring of sound sources at remote locations.

Paging Microphones

Clouds paging microphones are designed for general purpose multi-zone applications and have a powerful range of options that make them suitable for almost any situation. They are easy to install and configure, and provide the user with an elegant and simple-to-use unit.

EVOKO

We really love meetings, getting together and making things happen. Today it's a vital discipline, but we still feel that much could be improved. Evoko is a subsidiary to SMS Smart Media Solutions and part of the Draper family of brands. Our offices are located in the US and Middle East with our head office in Sweden. Evoko are Swedish, design-driven innovators dedicated to making professional gatherings smoother, more cost-efficient and stylish. We aspire to give you the tools to make every meeting magnificent. The rest is up to you.



Great Team Player

Evoko Minto operates smoothly with your mobile phone, tablet or laptop. Working either through Bluetooth or cable, it takes only seconds to connect. The blue color, showing you a Bluetooth device is connected, changes to green when a call is active and instantly shifts to red when muted – letting you know you can speak freely.

Smooth Talker

A remarkable sound, based on a decade of research with patented sound-improvement software and a speaker chosen for its ability to clearly play the human voice. When you don't want to be heard for some reason, just swipe your hand in the air over the top. The Halo Light instantly turns red and the microphones are muted so that you can speak freely. Evoko Minto has built in voice instruction technology for clear, informative updates. A real smooth talker...

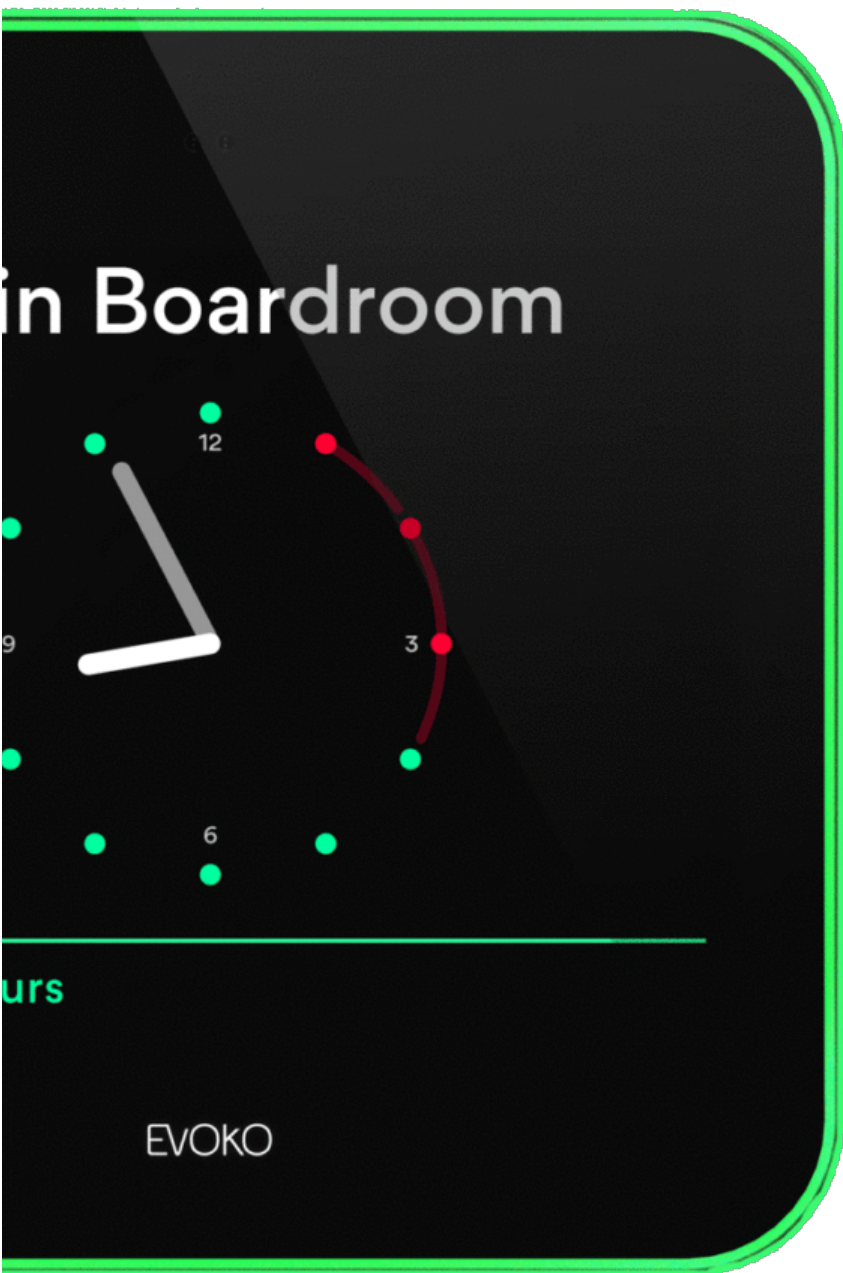
Real Good Listener

Evoko Minto is unique in its ability to hear what's really important. Even in noisy environments and with people talking at different distances or moving around. Four directive microphones alternate to capture only the voice of the person talking and leaves all distractions out. Minto easily covers rooms of 20 people – deliver your message loud and clear to everyone on the call. Evoko Minto is such a great listener.

Lovely To Be Around

Evoko Minto is designed by award-winning Swedish designers No Picnic. The design is one of the keys to great performance. So easy to use that absolutely anyone can master it. Because it is battery powered, you can use it instantly in any room. When, finished just put it on the Wall Mount to charge and free up the space on the meeting room table.

EVOKO



Bright And Helpful

Evoko Liso makes it easier than ever to book a room with your favorite digital calendar, or directly on the screen using your fingertip. Now we are taking the intuitive user interface to a whole new level. Our room booking system presents all information elegantly on the screen and it actually changes information on the display when someone walks up to it, always displaying the most relevant information. Book, end or extend a meeting directly from the clock, or use the calendar to search for other rooms based on availability, size and equipment.

Thanks to the green, amber and red light aura, you can see at a glance if the room is vacant or not. No more confusion or double bookings.

Analytical And Efficient

Evoko Liso gives you full insight into your organization's meeting patterns to really optimize resources. You get decision making support that truly cuts cost by analyzing statistics in the web based Evoko Home. Now more comprehensive than ever, making sure you use the perfect room for every single meeting. Evoko Home, our room scheduling system, also offers extensive multi-site management options with permission control and real-time unit monitoring. It has never been easier to open the door to a much more efficient meeting culture.

Making Meetings Even Smoother

Once again, we are proud to revolutionize the way you meet. Since 2010, Evoko Room Manager has taken the hassle out of room bookings. This was the original touch-screen solution for all your meeting rooms. No more double bookings, confusion and interrupted meetings. Now we are launching the next generation room booking system: Evoko Liso. Even brighter and lovelier to look at, believe it or not. With the same mission as ever – making sure all your meeting rooms are being used in a truly effective way.

Thanks to the green, amber and red light aura, you can see at a glance if the room is vacant or not. No more confusion or double bookings.

EVOKO

POWER/LITE





Powerlite is a South African designed and manufactured range of audio visual installation accessories. Our in-house design and manufacturing capabilities allow us to customize and tweak existing products to suit our client's needs. We are also constantly reviewing and evolving our product range for further functionality and better aesthetics, while keeping it as cost effective as possible.

Powerlite products are very popular in the Government sector due to their robust design and the ability to manufacture custom made products in our warehouse in Johannesburg, South Africa. The products most widely used in the government and education sectors, are projector brackets & poles as well as projector cages in various sizes.

SONY



Education Projectors

Projectors for schools, colleges and universities.
Portable, installation and Ultra Short throw models
Low running costs plus smart interactivity for
connected classrooms.



Business Projectors

For boardrooms, meeting areas and larger venues.
Short throw, desktop and installation models.
Lamp or laser for crisp, bright images with easy
operation and running costs.



4K Cinema Projectors

Range of projectors for any size of cinema screen.
Projectors for lamp or long lasting laser light
sources Industry-leading high-contrast ratio
performance.



Simulation Projectors

For boardrooms, meeting areas and larger venues.
Short throw, desktop and installation models.
Lamp or laser for crisp, bright images with easy
operation and running costs.



Large Venue Projectors

High brightness, high contrast projectors for
large rooms and venues. Lamp or long lasting
laser source. Flexible integration and generous
connectivity options.

Grandview



Grandview is committed to creating an irreplaceable, international Brand. Our core value is rooted in both superior quality and exceptional service. Our greatest pleasure is to expertly manufacture displays that are unique & aesthetically pleasing.



Cyber Series Manual Pull-down Screens

The Cyber Manual Series design is the result of inspiration derived from Renaissance Era architecture and ancient Corinthian columns. Innovative features such as the floating L-bracket which makes installation extremely easy. A patented Slow-Retract/Self-Lock function ensure the screen is as functional as it is aesthetically pleasing.



Legacy Motorized Screen

The Legacy Series is designed based on the benchmarks of the Cyber Series. New design elements include the screw-free endcap design, and patented Spring-Sealed Mechanism that ensures a smooth and enclosed finish



Legacy Series Tab-Tension Motorized Screen

The Fancy Series is designed based on the benchmarks of the Fantasy Series, which is similar in performance and options as the Cyber Series. New design elements include the screw-free endcap design, and patented Spring-Sealed Mechanism that ensures a smooth and enclosed finish. The Grandview Fancy Series is designed to seamlessly integrate with any type of décor.



Prestige Series Fixed Frame Screen

Grandview's Fixed-Frame Series is the enthusiast's choice for a dedicated home theatre experience. It features a multipoint tensioning system that ensures the surface is evenly tensioned for a perfectly flat projecting surface. Grandview's ISF certified 4K screens will bring the big cinema experience right into your home.



Edge Series Fixed Frame Screen - R1

As projection technology has advanced, the ability to project into a precise space has become the norm. Thus, it is no longer mandatory for a wider frame to be used to absorb offset projections. With that, Grandview's Edge Series Fixed-Frame screens offer another beautifully designed option to its collection. With a frame that only measures 12mm in width, it's designed to maximize your viewing experience while minimizing installation space.



Dynamique Series ALR Fixed Frame Screen

Grandview's Dynamique Series Ambient Light Rejection (ALR) screen features deep black levels, high contrast, excellent color saturation, and wide viewing angle. The Dynamique Series is a perfect pair with any ultra-short throw projectors on the market. You will be able to watch your favorite show even with ambient light on a big screen.

The DY3 fabric can only be used with ultra-short throw projectors.



SmartbusG4- Automation and control brand. The home of wired Smart-bus and wireless S-wave products range for total control of lighting, air conditioning, security, motorized shades and gates, appliances and irrigation.

- **Energy Control**
- **Scheduling**
- **Moods**
 - Welcome
 - Meeting
 - Presentation
 - Brain Storming
 - Pause/ Break
 - Good Bye
- **Temperature**
- **Presentation Control**
- **Convenience**
- **Comfort**
- **Media Control**
- **Wifi and 3G control**





The Zero-Ohm Multispeaker System is a passive device that interconnects between any amplifier and multiple loudspeakers without worrying about amplifier speaker loads, impedance and extremely long cable runs. The patented design eliminates the need for 70V and 100V transformers. This device allows you to connect 20,30,40 or more speakers in parallel to one amplifier. Up until now, the ability to connect multiple speakers in parallel was confronted by the issue of operating the amplifier at a safe nominal wattage. Although there are amplifiers that operate at 4 ohms and 2 ohms safely, any effort to drive it below the rated resistance led to device failures.

With this revolutionary invention, the rules have changed.

Pushing boundaries, and bending rules.



Transforming the Laws of Sound™

Passive Unit. No external power source.

Reduce the number of amplifiers required as well as costs.

Connect to any amplifier without worrying about speaker loads, impedance and very long cable runs.

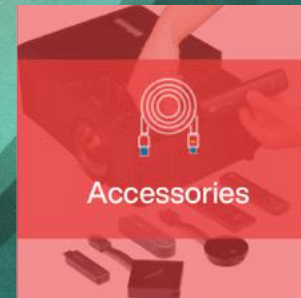
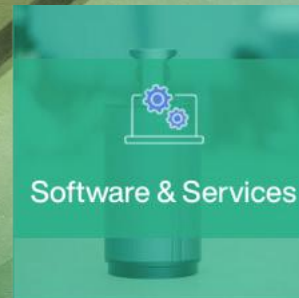
Maximum capacity of 4000 watts. Special orders can be made up to 10,000 watts.

Our product is rack-mounted but our core technology can be integrated into an amplifier for unique applications.



In 1986, a team of engineers in Portland's Silicon Forest imagined there must be a better way to share information. Founded on this belief, InFocus went on to create new ways to present information and collaborate beyond overhead projection, combining digital technology with light to advance how and what we can display in many powerful ways. InFocus is the inventor of the digital projector. Many firsts followed, including the first DLP projector, the first sub-five-pound projector, the first ultra-thin projection television, the first all-in-one interactive whiteboard with touch technology, video conferencing, and many more milestones that have contributed to creating a multi-billion-dollar display industry.

InFocus





Genesis



The new Genesis Series offers a wide range of entry-level projectors featured and priced to get you started quickly. Ultra-long lamp life, high brightness, low latency, and versatile connectivity – this Series has the flexibility you need with the resolutions you want.

From 800x600 to 1920x1200, coupled with the compact & lightweight form factor (just under 6 lbs.), the Genesis Series from InFocus will enhance your displays from the conference room to the classroom, to your living room – easily.

LightPro



Our advanced DLP lamp-based LightPro Series offers an affordable range of resolutions coupled with very high brightness and enhanced features to deliver next-level collaboration and entertainment.

Available in standard and short throw, the LightPro Series offers improved input options with 3x HDMI and USB-A Power for flexible connectivity and convenient accessibility for your Roku, Amazon Fire TV Stick, or other devices.



Quantum LED



The Quantum LED Series projectors fit anywhere, go anywhere, with ultra-long-lasting images and unbeatable quality and color. At only 4.4 lbs., this Series is very light, durable, and compact – which makes it perfect for business travelers or anyone who needs to take their presentation on the road.

With notable features like support for AirPlay and MiraCast and the InFocus Quantum Color engine, which brings a massive color gamut, up to 40% larger than leading competitors, and high color luminosity ratio, let us bring your screen to life.

Quantum Laser



The Quantum Laser Series offers premier projection that is easy to use, long-lasting, and vibrant - powered by the InFocus Quantum Color Engine - ideal for offices or conference rooms. With an incredibly bright 5500 lumens and full 1920 x 1080 HD or WUXGA resolution, plus a fantastic 30,000-hour light source, you can expect exceptional image quality for years to come.

Couple all this with HDR high image performance with Dynamic Blacks, HDBaseT connectivity for simultaneous video and audio, and an ultra-short throw option, this top-of-the-line projector will exceed your expectations.

ROLLS



Rolls Corporation is a company specializing in audio electronics manufacturing. Products include signal processors, amplifiers, mixers, signal sources, and interface accessories.

Rolls began in 1989 when Marilyn and David O. Di Francesco introduced the HR100 amplifier, the HR11c Microphone Processor, the HR6x mixers, and the HR210 eq -all half rack at the New York AES Convention. David is well known and respected in the professional audio electronics industry, his first company still bears his initials.

RFX came into being in 1993 with the release of the MP128p MIDIBUDDY. Soon, this unit was followed by dual-function effects pedals, a volume pedal, and a wah/volume pedal. Bellari was born in the summer of 1995 with the introduction of the RP220 Dual Tube Mic Preamp.



Johannesburg

**Unit B5, Deco park Phase 2,
Newmarket Road,**

North Riding,

**Randburg
011 462 4595**

Durban

**Unit 5, Thynk Industrial Park,
1 Brickworks Way,**

**Briardene
031 100 1123**

Cape town

**Unit 5 Creation Park,
Computer Road**

Montague Gardens

**Cape Town
021 300 1450**